

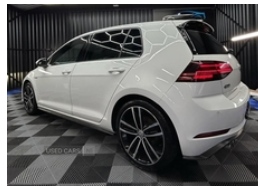


Yard 1 Knockroe Business Park, Strabane, BT82 9QR  
Martin: 02872002013 | Shaun: 02872002013

## Volkswagen Golf 2.0 TDI 184 GTD 5dr | Apr 2017

**MINT GTD DIGI DASH NI REGISTERED**

# £15,450



Vw Golf 2.0tdi GTD 184

own this Vw golf for as little as £74 per week. To apply for a personal finance quote click link below. Just follow these 3 simple steps

1. Go to our showroom
2. Click on vehicle you are interested in
3. Go to apply now

2017

12 months mot

59k motorway miles

Manual

cruise control

Privacy glass

Dab

sat nav

Digital cock pit

Tartan interior

Media pack

service history

Timing belt

Mint condition inside and out

car will come

Fully Serviced

Fully valeted

Full health check

All paperwork completed by us

3 months warranty

Excellent exchange rate on euro

All Major credit/Debit cards

Delivery can be arranged Nationwide

|                         |                          |
|-------------------------|--------------------------|
| <b>Miles:</b>           | 59950                    |
| <b>Fuel Type:</b>       | Diesel                   |
| <b>Transmission:</b>    | Manual                   |
| <b>Colour:</b>          | White                    |
| <b>Engine Size:</b>     | 1968                     |
| <b>CO2 Emission:</b>    | 125                      |
| <b>Tax Band:</b>        | Petrol/Diesel (£195 p/a) |
| <b>Body Style:</b>      | Hatchback                |
| <b>Insurance group:</b> | 27E                      |
| <b>Reg:</b>             | DN17RZD                  |

## Technical Specs

### DIMENSIONS

|                                     |        |
|-------------------------------------|--------|
| <b>Length:</b>                      | 4258mm |
| <b>Width:</b>                       | 1799mm |
| <b>Height:</b>                      | 1492mm |
| <b>Seats:</b>                       | 5      |
| <b>Luggage Capacity (Seats Up):</b> | 380L   |
| <b>Gross Weight:</b>                | 1890KG |
| <b>Max. Loading Weight:</b>         | 570KG  |

### PERFORMANCE & ECONOMY

|                                    |         |
|------------------------------------|---------|
| <b>Fuel Consum. (Urban Cold):</b>  | 51.4MPG |
| <b>Fuel Consum. (Extra Urban):</b> | 65.7MPG |
| <b>Fuel Consum. (Combined):</b>    | 60.1MPG |
| <b>Fuel Tank Capacity:</b>         | 50L     |
| <b>Number Of Gears:</b>            | 6 SPEED |
| <b>Top Speed:</b>                  | 144MPH  |
| <b>Acceleration 0-100 km/h:</b>    | 7.5s    |
| <b>Engine Power BHP:</b>           | 181BHP  |

Viewing 6 days a week with indoor viewing available in evenings.  
Saturday appointments only

Yard 1  
knockroe business park  
strabane  
BT82 9QR

Shaun 028 7200 2013  
Martin 028 7200 2013  
WhatsApp 028 7200 2013

£15450

## **Vehicle Features**

'Lights On' warning buzzer, 3 point height adj front seatbelts + pretensioners, 3 rear 3 point seatbelts, 3 rear headrests, 3 spoke steering wheel, 3D-LED-SBBR with sweeping indicator, 8" touch screen, 12V socket in luggage compartment, 60/40 split folding rear seat, ABS, Adaptive Cruise Control with pedestrian detection and speed limiter, Air conditioning - 2 zone electronic climate control, Alarm with interior protection, Ambient lighting pack - Golf, Anti-tramp function, Auto dimming rear view mirror, Automatic coming/leaving home lighting function, Automatic headlights, Automatic post collision braking, aux-in, Bag hook in luggage compartment, Black headlining, Black rear diffuser, Bluetooth hands free telephone connection, Body colour door handles, Body colour door mirrors, Body colour rear roof spoiler, Body colour sports bumpers, Boot lashing points, Brake pad wear indicator warning light, Car-Net App-Connect, CD/MP3/WMA, Child locks on rear doors, Chrome-plated light switch surround, Composition media system, Cooled glovebox, Courtesy light delay, Cover for storage compartment in centre, DAB Digital radio, Diesel particulate filter, Drive mode selector, Driver/Front Passenger airbags, Driver/Passenger whiplash optimised head restraints, Driver alert system, Driver profile selection, Drivers knee airbag, Dust/pollen filter, Electrically adjustable and heated door mirrors, Electric front windows, Electric rear windows, Electronic engine immobiliser, Electronic parking brake with auto hold, ESP with EDL + ASR, Exterior temperature gauge, Front + rear carpet mats, Front and rear curtain airbags, Front centre armrest with storage box and rear air vents, Front passenger airbag deactivation, Front passenger drawer stowage, Front passenger seat height adjust, Front seat back storage pockets, Front side airbags, Grab handles, Heated rear windscreen, Height/reach adjust steering wheel, height adjustable and removable, Height adjustable driver's seat, Honeycomb black decorative inserts, Honeycomb radiator grille - black, Illuminated door sills, Illuminated vanity mirrors, Instrument cluster in white, Isofix preparation for 2 rear child seats, Leather gear knob and handbrake grip, LED daytime running lights, LED front fog lights, LED rear lights, Load through provision with rear centre armrest and cupholders x2, Lowered sports suspension, Luggage compartment cover, Luggage compartment lighting, Mirror pack

- Golf, Multifunction computer, Multifunction leather steering wheel with grey stitching leather trimmed gear knob including paddle shift, Overhead storage box, Piano black centre console, Pre crash system, Progressive power assisted steering, Rain sensor, Rear windscreen washer and wiper with interval delay, Remote central locking with 2 remote folding keys, Rev counter, Space saver spare wheel, Stainless steel pedals, Storage box in luggage compartment, Storage compartments in doors, Sun visors, Trip and service interval display, Twin exhaust tailpipe, Tyre pressure monitor, Ultrasonic front and rear optical and audible parking sensors, USB and SD card reader, Variable boot floor, Warning buzzer and light for front seatbelts unfastened, XDS plus electronic differential lock